



# AUCTION

LEADING THE INDUSTRY SINCE 1945

Realtors • Auctioneers • Advisors

**SATURDAY – JANUARY 2, 2021 – 11:00 AM**

**COMMERCIAL ZONED LAND WITH UTILITIES AVAILABLE  
TWO ADJOINING PARCELS – 15 ACRES & 19 ACRES – MARKET-  
ABLE TIMBER - LIBERTY TWP. – TRUMBULL CO.**

**ONLINE BIDDING AVAILABLE**

ABSOLUTE AUCTION, all sells to the highest bidder on location:

**BELMONT AVE. (ST. RT. 193), GIRARD, OH 44420**

Directions: Take Rt. 193 north of Rt. 80 or south of Rt. 82. Just north of Tibbet Wicks Rd. Watch for KIKO signs.



Maps at site or visit us on the web. Both have nice frontage - #1 has fair amount of timber in rear. Water/sewer/gas available. Come walk them over.

**TERMS ON REAL ESTATE:** 10% down auction day, balance due at closing. A 10% buyer's premium will be added to the highest bid to establish the purchase price. Any desired inspections must be made prior to bidding. All information contained herein was derived from sources believed to be correct. Information is believed to be accurate but not guaranteed. Property to be sold as Separate Parcels and not to be offered as an Entirety.

**Auction By Order Of: JHB Enterprises LLC**

Information is believed to be accurate but not guaranteed. KIKO Auctioneers

**800-533-5456 | kikoauctions.com**



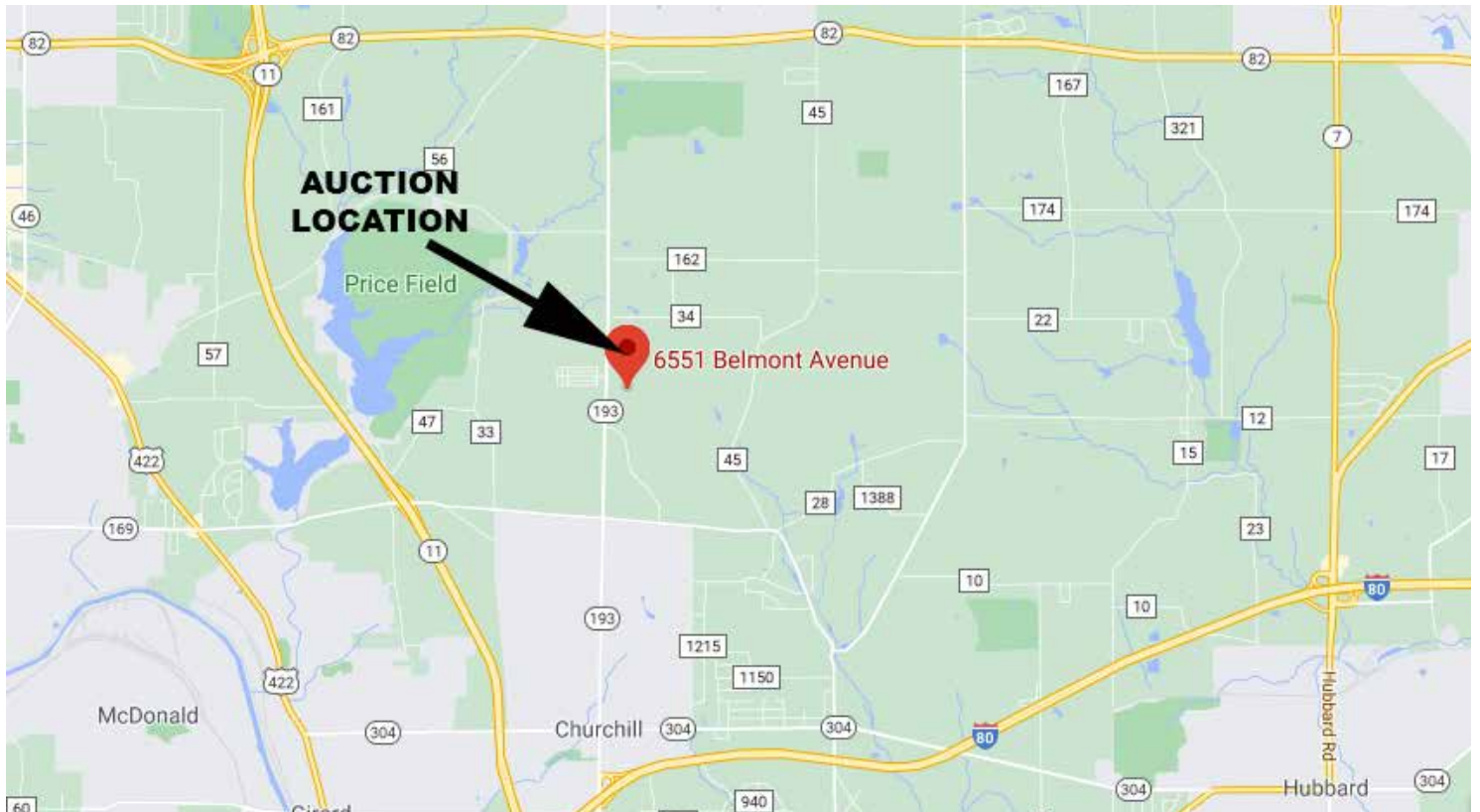


2722 Fulton Dr. NW, Canton, OH 44718  
[kikoauctions.com](http://kikoauctions.com)

**Saturday – January 2, 2021 – 11:00 AM**

## COMMERCIAL ZONED LAND WITH UTILITIES AVAILABLE

Two Adjoining Parcels – 15 Acres & 19 Acres –  
Marketable Timber  
Liberty Twp. – Trumbull Co.  
Online Bidding Available



Auctioneer/Realtor®  
**RUSSELL T. KIKO JR.**  
330-495-0923  
[rustykiko@kikocompany.com](mailto:rustykiko@kikocompany.com)

**800-533-5456 | [kikoauctions.com](http://kikoauctions.com)**

